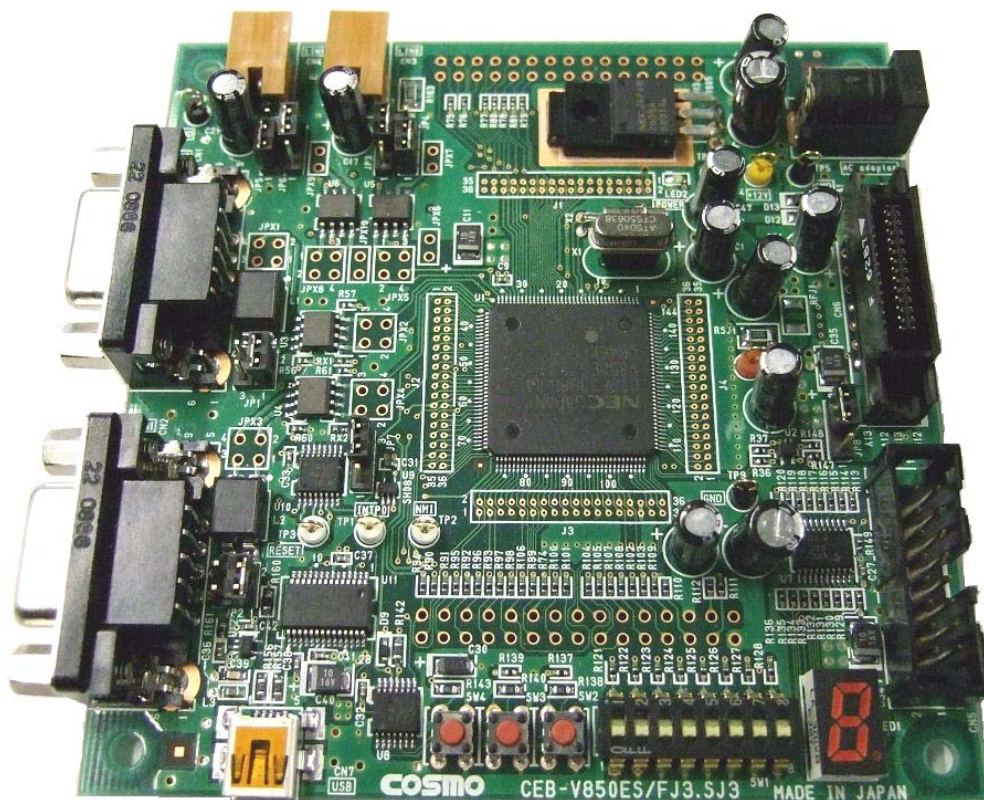


V850ES/SJ3 Evaluation Kit

CEB-V850ES/SJ3



CAN I/F 2Ch LIN I/F 2Ch

◇CAN I/F can be enhanced to 4ch by connecting the option board.

Debug I/F

◇MINICUBE, MINICUBE2

Enhancing terminal that draws out CPU signal terminal outside

USB supplies the power supply

◇The power supply of the LIN interface is necessary.

■ Basic specification

Product	CEB-V850ES/SJ3
CPU	V850ES/SJ3
Operation frequency	32MHz
External connector	CAN I/F(9pin) x 2
	LIN I/F(3pin) x 2
	MINICUBE I/F x 1
	MINICUBE2 I/F & PG-FP4,PG-FP5
	USB I/F (Mini B) x 1 : For UART communication
	External through hall (30Pin) x 2 : For user circuit connection
SW	RESET NMI INT
LED	Power LED
	7-Seg.LED x 1
Board Size	100mm x 100mm

● Content of set

■ CEB-V850ES/SJ3

-CEB-V850ES/SJ3 Board	1Pcs
-Set up CD	1Pcs
-CAN Cable	1Pcs
-AC adaptor (DC:12V)	1Pcs