

# TS-R-IN32M3-EC-E Evaluation Kit

( EtherCAT-ready )

This kit is an evaluation platform for software and system development of Renesas Electronics' industrial Ethernet communication LSI (R-IN32M3-EC) supporting EtherCAT.



## Features



- Supports multiple protocols, such as EtherCAT (protocols : EtherCAT, EtherNet/IP, PROFINet, etc.)
- Evaluation of various interfaces is possible. (Ethernet, CAN, CSI, I2C, UART(USB), etc.)

## Specifications

List item	Spec
Product Name	TS-R-IN32M3-EC-E
On-Board LSI	Renesas Electronics System LSI R-IN32M3-EC Note 1 - ARM Cortex™-M3, 32-bit RISC CPU with HW-RTOS (Hardware RTOS) - Operating frequency: 100MHz - RAM: 1.3M-byte large-capacity - 10BASE-T/100BASE-TX Ethernet PHY
Embedded memory	Flash memory (Serial): 32M bits × Dual Flash memory (Parallel): 2M × 16bit EEPROM : 16K bits
Interface	UART(USB), CSI, I2C, CAN, RJ45(Ethernet/EtherCAT) Extension connector, GPIO, CC-Link Note 2
Debug interface	20-pin half-pitch connector (trace supported)
Supported emulators	IAR Systems:I-jet/JTAGjet Yokogawa Digital Computer: adviceLUNA
Power supply	AC adapter: 5.0V ± 5% 2A or more (Center plus) Note 3
Operating ambient temperature	0 to +70°C
Dimensions	W145mm × D95mm
Accessories	USB cable : 1 Conversion cable: 1

Obtainable from the Renesas Electronics website:  
- R-IN32M3-EC related documents, sample software, and application notes

Note 1. For more details on the R-IN32M3-EC LSI, refer to the related documents available from Renesas Electronics.

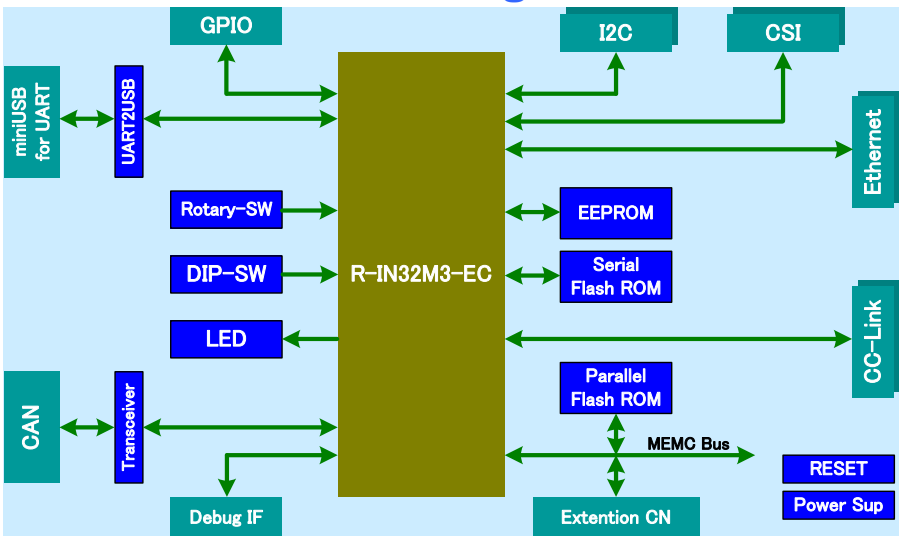
Note 2. The conformance of the circuitry for CC-Link of this board is un-corresponding.

CC-Link supports only a slave(Remote Device station).

When you make CC-Link attach, please connect by an attached conversion cable.

Note 3. AC adapter is not included. Please purchase separately.

## Board Configuration

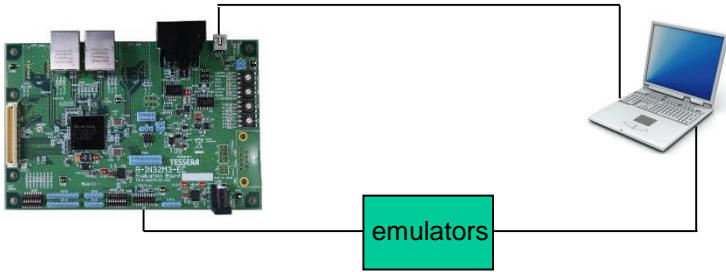


## Development Environment

To start developing your application software, first download sample software from the Renesas website and run the code with the emulator and PC.

Manufacture	Compiler	Debugger	emulators
IAR Systems	EWARM	EWARM	I-jet JTAGjet-Trace-CM
Yokogawa Digital Computer	ARM original RVDS4.1	microVIEW-PLUS	adviceLUNA AP510(Non trace) AP511(trace) A translation adapter is required.(AQ735)
	GNU		

TS-R-IN32M3-EC      UART(USB) connection for monitoring



○When developing application software with this kit, please confer with your local Renesas contact.

◎ All product and service names introduced in this document are trademarks and/or registered trademarks of their respective companies.  
 ◎ The products and services described in this document are subject to change and/or discontinuation without notice.